



LET'S GET TOGETHER

THE  
T R A W O O L  
E S T A T E

# WILD WATER RESTAURANT

Arguably the most impressive room in the house, Wild Water, our 120-seat beautiful dining restaurant, has tremendous views of the Trawool Valley.

The local Taungurung indigenous word Traawool proudly translates to Wild Water and is honoured in the naming of our space.

Minimalist interiors juxtapose against bright, contemporary Australian cuisine with a focus on farm to plate and highlights the best locally sourced produce.

The spectacular views of the National Trust listed Goulburn Valley Ranges gives the "wow-moment" your event deserves. We have a stunning array of food and beverage offerings which will no doubt elevate any type of occasion into an unforgettable experience.



## TURBINE

You'll find Turbine downstairs at The Trawool Estate, in a secret ambient and intimate setting. Indulge in our speak easy style venue that's a first of its kind in the region. Winner of *Best Regional Hotel Restaurant* in August 2022 confirms drinking and dining in the basement of our beloved mansion, will no doubt be an experience you will never forget.



## ANGLESEY

The perfect space all year round to celebrate and get together. Room for a sit-down reception, as well as a dancefloor. The Anglesey is the ideal event venue. With AV equipment and multiple options for laying out your conference, it's the best place to reconnect with your team.

## DOME ROOM

This light filled space with floor to ceiling windows has a stunning glass dome overhead, a perfect space for intimate gatherings. The Dome overlooks the stunning Trawool Valley hills and our outdoor pool and grounds beyond.



## WARRIGUL ROCKS

This private dining and meeting space is located off the main restaurant, Wild Water. Easy access to the bar and glimpses of the stunning Trawool Valley views, make this intimate space perfect for smaller groups.

The AV equipment and boardroom size tables also make this our go-to for meetings and small conferences.

## TERRACE

Situated across the road from the main estate and nestled into the untouched rocky bush surrounds is our outdoor acoustic amphitheatre, The Terrace. With tiered, all-weather surfacing and car park, you can make this space your own.





# CONFERENCE SPECIFICATIONS

*\*condition dependent*

ROOM CAPACITY	THEATRE	BOARDROOM	CLASSROOM	U-SHAPE	COCKTAIL	BANQUET	AREA SQUARE M <sup>2</sup>
ANGLESEY	130	18	50	40	120	80	170
WARRIGUL ROCKS	30	12	15	-	-	18	28
DOME ROOM	-	-	-	-	30	30	45
WILD WATER	160*	-	-	-	180	140*	205
TERRACE	100	-	-	-	200	120	315



# PRICING

---

<b>PACKAGES (FOOD ONLY)</b>	<b>HOURS</b>	<b>PRICE P/H</b>
CANAPE COLLECTION	3	\$59
2-COURSE DINING	3	\$79
3-COURSE DINING	3	\$89
TURBINE SHARED	3	\$80
BOTTOMLESS PIZZAS	2	\$49
CORPORATE (FULL DAY)		\$80
CORPORATE (HALF DAY)		\$50
CORPORATE (MT or AT ONLY)		\$15pp + \$250 hire
CAKEAGE		\$5

## BEVERAGE PACKAGE

---

<b>PACKAGES (BEVERAGE ONLY)</b>	<b>HOURS</b>	<b>PRICE P/H</b>
HOUSE BEER, WINE & SOFT DRINKS	3	\$65
CHAMPAGNE TIER 1	2	\$25
CHAMPAGNE TIER 2	2	\$35
SPIRITS	3	\$15
SPRITZ	3	\$20

---

*Bar tab and beverages on consumption is also available*

	MINIMUM SPEND	ROOM HIRE
ANGLESEY ROOM	\$0	\$500
HERB GARDEN	\$2,500	\$0
DUCK HILL (with pool bar)	\$2,000	\$0
DOME ROOM	\$1,500	\$0
WARRIGUL ROCKS	\$0	\$250
TERRACE	\$0	\$600

*additional fee of \$400 to set up water station & 40 white folding chairs*

## ADDITIONAL CONDITIONS

Conference dinner locations and menus dependent on which restaurant is open and is subject to change without prior notice. *Corporate events need a current ABN.*



## CANAPÉ COLLECTION

Seated or standing event

4 canapes *per guest*

1 mini mains *per guest*

1 dessert canape *per guest*

*Beverages not included. Minimum 20 guests*



## 2 COURSES

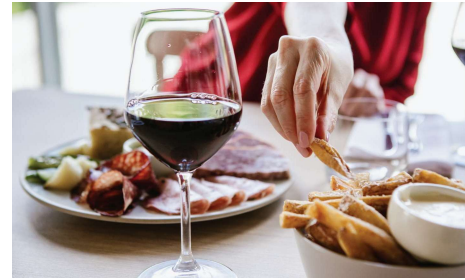
Seated event

Choose from shared style or alternating

Entrée and Main with shared sides

or Main with shared sides and Dessert

*Beverages not included. Minimum 10 guests*



## 3 COURSES

Seated event

Choose from shared style or alternating

Entrée, Main with shared sides and Dessert

*Beverages not included. Minimum 10 guests*



## TURBINE SHARED

Seated event

Enjoy a Journey Through The Menu

Shared Small Bites, Entrees, Mains and Dessert

*Beverages not included. Minimum 10 guests*



## PIZZERIA

Outdoor event in Herb Garden.

Bottomless chef selection of 4 pizzas and salads.

*Beverages not included. Minimum 20 guests*



## CORPORATE

Choose from our corporate menu.

Includes Morning Tea, Lunch and Afternoon Tea.

Tea and Coffee Station for your convenience.

Notepads & pens included.

*No minimum on group size.*

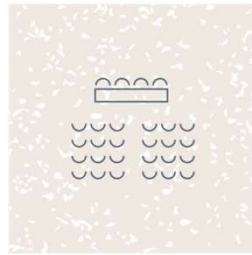
*All pricing overleaf  
Exclusive room hire is for 4 hours.*



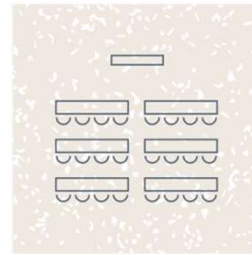


## ROOM LAYOUT

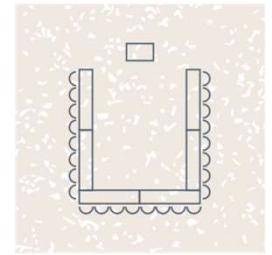
All spaces can be laid out the best way to suit your event.  
*See right some examples*



THEATRE



CLASSROOM



U - SHAPE

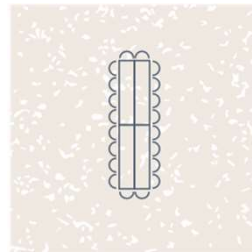
## AV SPECS

The Anglesey Room has a 75" UHD TV, x2 roaming microphones and state of the art sound system.

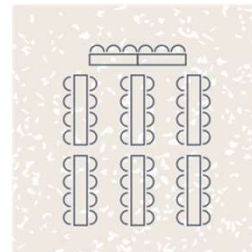
Warrigul Rocks has a 65" UHD TV and state of the art sound system.

Wild Water has roaming mics and a state of the art sound system.

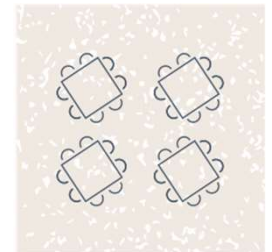
The Dome Room & Turbine are intimate event or meeting spaces with no AV available at this time.



BOARDROOM



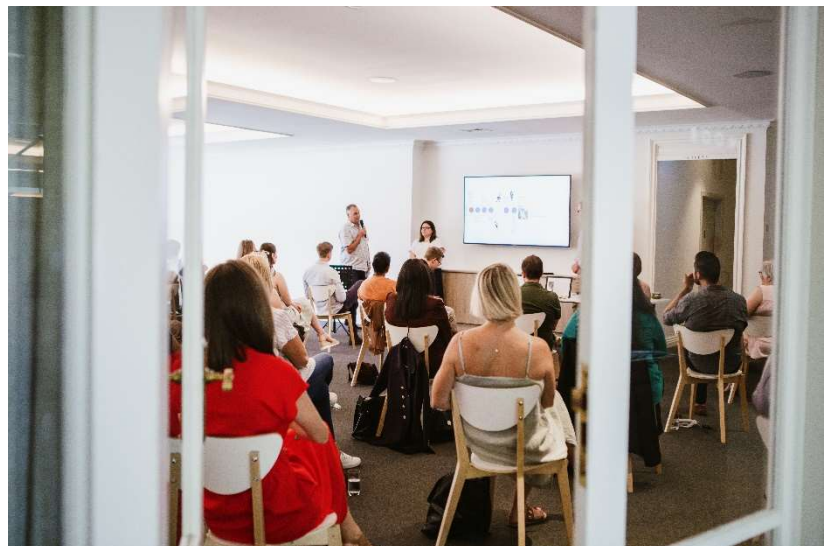
BANQUET



CABARET

## EVENT HIRE ITEMS

Portable PA system, white board & flip charts are also available for hire.



## EVENTS OUTSIDE REGULAR TRADING DAYS

The Trawool Estate is closed on Mondays and Tuesdays however conferencing is available, if the following criteria are met;

- Single day conference (without dinner); no minimum numbers required
- Accommodation, requires a minimum of 15 rooms booked.
- Dinner packages require a minimum of 15pax.



# ACCOMMODATION

Trawool Estate has 27 beautifully renovated accommodation rooms. At capacity, we can accommodate 68 guests.

Guests are able to choose to stay in one of our 20 luxurious hotel rooms or the 7 motel-style Valley Rooms that offer more space for sharing groups, which provide breathtaking and uncompromising views across the Trawool Valley.

All rooms enjoy 2 complimentary buffet breakfasts included with your stay.

Our hotel rooms have all been freshly renovated to the highest and most luxurious specifications.

They feature fresh, modern interiors and furnishings. Everything has been designed to help you truly unwind and indulge in comfort in the relaxing Trawool Valley setting.

## SUITES

*3 beautiful King Suites to choose from.*

These rooms offer the largest space in our single rooms to give you the opportunity to relax and just breathe.

Reward yourself with a hot shower or bath after a long day, then slide in-between the sheets of our incredible King-sized beds.

Equipped with all the services and amenities to make your stay comfortable and relaxing.



## HOTEL ROOMS

*We have several styles of hotel rooms*

6 Deluxe King with Bath      5 Luxury King  
4 Deluxe King                      2 Standard King

These beautiful rooms have everything you'll need to escape to the bush in comfort! After a busy day of drinking, dining, cycling or tennis, you'll love a soak in the bath followed by your favorite movies from bed. We've also stocked the mini bar full of goodies to help you unwind and relax.

Only the Deluxe King w Bath has a shower over a bath. All other rooms have walk-in showers.

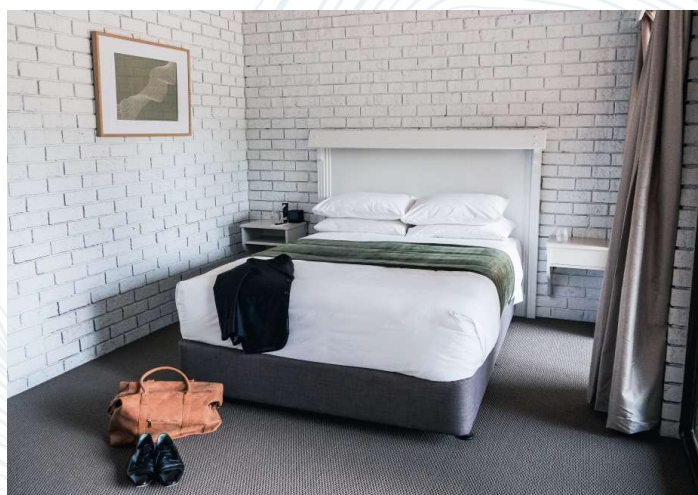


## VALLEY ROOM

*7 Traditional motel style rooms  
4 occupants max. 1 queen bed & 2 singles.*

Designed around those visitors who are happy to share without compromising on sweeping Trawool Valley views, and only meters from the Great Victorian Rail Trail.

You'll love lying in with comfy beds after a day exploring the Trawool Valley. Valley Rooms allow you to fix yourself a snack in your kitchenette and the separate bedroom with 2 single beds creates privacy.





THE TRAWOOL ESTATE

## THE TRAWOOL ESTATE

8150 GOULBURN VALLEY HIGHWAY,  
TRAWOOL VIC 3660

03 5792 1444  
contact@trawoolestate.com.au  
trawoolestate.com.au

THE TRAWOOL ESTATE @TRAWOOL\_ESTATE

Get more out of your event by planning and enjoying these add ons

# EXTRA EXPERIENCES

## COCKTAIL MASTERCLASS

Join one of our resident Mixologists for our popular Cocktail Masterclass. Learn the art of how to concoct the perfect cocktail, pour some yourself then sit back and enjoy the fruits of your labour!

## EXCLUSIVE DINING & DRINKING EXPERIENCES AT TRAWOOL

With a variety of dining areas and bars, let us organise the perfect dining and drinking experiences for your event.

## ADVENTOURS CANOEING

For experienced paddlers to beginners, Adventours Canoeing showcase our beautiful local waterways around Trawool, Seymour, Nagambie and Tahbilk Winery.

## ALL TERRAIN CYCLES

Over 15 years of delivering guided day and multi-day rides, skills clinics, bike hire, and logistical support.

## BRAVE GOOSE TOUR

Brave Goose is a small vineyard 10 minutes from Trawool whose mission is simple - to nurture premium grapes to create quality wine.

## FLY FISHING

The fun and skill of Fly Fishing in our nearby waterways!

## LONG TABLE MEETINGS IN WILD WATER

Working lunches and/or dinners can be facilitated on a long table in the Wild Water restaurant.

## PHOTOGRAPHY

Need to update those staff photos? With you all together, it's the perfect opportunity.

## RAMBLING WINE TOURS

Friendly, professional local tour guide & driver to local wineries with deluxe vehicle service.

## TAHBILK WINERY

Established in 1860, there are walks, dining, winetasting, and tours to experience.

## TAUNGURUNG LAND & WATER COUNCIL

Cultural awareness sessions and wawa biik tours\* on country.  
*\* subject to availability*

## TENNIS COURT PARTY

Bring out the whites, Dunlop Volleys and headbands for a fun day of Tennis & Disco!

## PROPOSALS

Let us help you plan and execute that perfect moment to pop the question!

## TRANSPORT HIRE

Be it a bus or a private vehicle, we can help you get around.

## WINEXSAM TOUR

Wine by Sam is an urban vineyard experience located in Seymour and a fabulous way to see the whole wine process.

## YOGA

Enjoy sessions of stretching and balance nestled in the beautiful surroundings of the Terrace at Trawool.

Can't see what you're looking for?  
Just ask – we'll help find what you're hoping to do!





# OUR TEAM



JEMMA HIND

*Event Scientist*

[jemma.hind@trawoolestate.com.au](mailto:jemma.hind@trawoolestate.com.au)



BOB PIECHNICZEK

*Executive Chef*

[robert.piechniczek@trawoolestate.com.au](mailto:robert.piechniczek@trawoolestate.com.au)

T R A W O O L  
ESCAPE. DISCOVER ·INDULGE

8150 GOULBURN VALLEY HIGHWAY  
TRAWOOL, VICTORIA 3660

PHONE: +613 5792 1444  
EVENTS@TRAWOOLESTATE.COM.AU

@trawool\_estate



TRAWOOLESTATE.COM.AU